

Nationwide Pre-Election Voter Survey for the House of Councillors

July 2019

<All>

Q1. Are you planning to vote in the upcoming House of Councillors election? Select the answer that most closely represents your views. (Choose one answer only.).

- 1 It is difficult to vote because I already have other plans on election day.
- 2 I don't have any other plans, but, for me, voting is a nuisance.
- 3 I don't have any problem with going to vote.
- 4 I have already voted early or absentee → (Go to Q3)

<For those who answered 1-3 in Q1>

Q2. Do you have a plan to vote early or absentee? Select the answer (below) that most closely matches your own opinion. (Choose one answer only.)

- 1 Yes, I think so.
- 2 I might.
- 3 I am not planning to.

<To all>

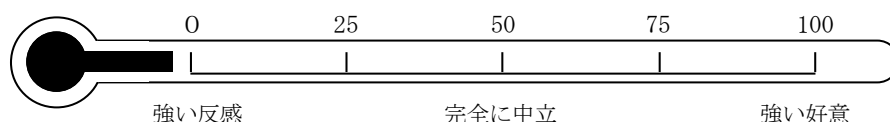
Q3. What do you think about voting in the upcoming election? Select the description that most closely represents your own opinion. (Choose one answer only.)

- 1 Voters must vote because it is their duty to do so.
- 2 Voters should do their best to participate in the election.
- 3 Voters have the right to decide for themselves whether to vote or not. They do not have to participate in the election.

Q4. How close do you expect the upcoming House of Councillors election to be in your district? Select the answer that most closely reflects your views. (Choose one answer only.)

- 1 The candidate I support will win the election, even if I don't vote, because he/she has a lot of supporters.
- 2 The candidate I support will win the election at the last minute, even if I don't vote.
- 3 The candidate I support is more likely to win the election if I vote because the election will be very close.
- 4 The candidate I support will have trouble winning the election if I don't vote.
- 5 The candidate I support will have trouble winning the election, even if I vote.
- 6 Other
- 7 I don't support any of the candidates.
- 8 I have not decided which candidate to vote for.

Q5. This question is about politically influential figures and parties. Please give each person or party a "50" rating if you neither like nor dislike them. To express a degree of positive feeling, please give each person or party a rating between 50 and 100 degrees. To express a degree of negative feeling, please give each person a rating between 0 and 50 degrees. The first question is about ABE Shinzo. How do you feel about him?



(1) ABE Shinzo

--	--	--

(7) Liberal Democratic Party

--	--	--

--	--	--

- | | | | | | |
|----------------------|----------------------|----------------------|----------------------|--------------------------------------|----------------------|
| (2) TAMAKI Yuichiro | <input type="text"/> | <input type="text"/> | <input type="text"/> | (8) Democratic Party for the People | |
| (3) YAMAGUCHI Natsuo | <input type="text"/> | <input type="text"/> | <input type="text"/> | (9) Komeito | <input type="text"/> |
| (4) MATSUI Ichiro | <input type="text"/> | <input type="text"/> | <input type="text"/> | (10) Nippon Ishin no Kai | <input type="text"/> |
| (5) EDANO Yukio | <input type="text"/> | <input type="text"/> | <input type="text"/> | (11) Constitutional Democratic Party | <input type="text"/> |
| (6) SHII Kazuo | <input type="text"/> | <input type="text"/> | <input type="text"/> | (12) Japanese Communist Party | <input type="text"/> |

Q6. By the way, what do you think of the Abe Cabinet so far? (Choose one answer only for each question from (1) through (5).)

	Very good	Good	Neither good nor poor	Poor	Very poor
(1) Fiscal policy	1	2	3	4	5
(2) Economic measures	1	2	3	4	5
(3) Diplomacy	1	2	3	4	5
(4) Political leadership	1	2	3	4	5
(5) Work of the Cabinet as a whole	1	2	3	4	5

Q7. Changing the subject, which party do you normally support—regardless of the party you are planning to vote for during the upcoming election?

- | | |
|-----------------------------------|----------------------------|
| 1 Liberal Democratic Party | 6 Japanese Communist Party |
| 2 Democratic Party for the People | 7 Another party |
| 3 Komeito | 8 No party |
| 4 Nippon Ishin no Kai | |
| 5 Constitutional Democratic Party | |

<For those who answered 1–7 in Q7>

Q8. Are you an enthusiastic supporter of the political party you support? Or do you not feel particularly enthusiastic about it? (Choose one answer only.)

- | |
|--------------------------------------|
| 1 I am an enthusiastic supporter |
| 2 I am not an enthusiastic supporter |

<For those who answered 8 in Q7>

Q9. If you had to choose, which party would you prefer? (Choose one answer only.)

- | |
|-----------------------------------|
| 1 Liberal Democratic Party |
| 2 Democratic Party for the People |
| 3 Komeito |
| 4 Nippon Ishin no Kai |
| 5 Constitutional Democratic Party |
| 6 Japanese Communist Party |
| 7 Another party (name:) |
| 8 No party |

<To all>

Q10. By the way, are there any political parties that you definitely do not support? Select all of the parties that apply. (Multiple answers allowed)

- | | |
|-----------------------------------|----------------------------|
| 1 Liberal Democratic Party | 6 Japanese Communist Party |
| 2 Democratic Party for the People | 7 Another party (name:) |
| 3 Komeito | 8 No party |
| 4 Nippon Ishin no Kai | |
| 5 Constitutional Democratic Party | |

Q11. Are you going to vote in the upcoming House of Councillors election? Have you already voted early or

absentee? (Choose one answer only.)

- 1 I have already voted early or absentee. → (Go to Q12)
- 2 I will definitely vote. ☐ → (Go to Q13)
- 3 I may vote. ☐ → (Go to Q13)
- 4 I may not vote. ☐ → (Go to Q15)
- 5 I am not going to vote. ☐ → (Go to Q15)
- 6 I have not decided yet. ☐ → (Go to Q15)

<Q12-1 and Q12-2 are exclusively for those who answered “1 I have already voted early or absentee” in Q11>

Q12-1. Which party’s candidate did you vote for in the House of Councillors prefectural electoral district?
(Choose one answer only.)

- | | |
|-----------------------------------|----------------------------|
| 1 Liberal Democratic Party | 6 Japanese Communist Party |
| 2 Democratic Party for the People | 7 Another party |
| 3 Komeito | (name:) |
| 4 Nippon Ishin no Kai | 8 Independent |
| 5 Constitutional Democratic Party | |

Q12-2. Which party or party’s candidate did you vote for in the national proportional-representation block of the House of Councillors? (Choose one answer only.)

- | | |
|-----------------------------------|----------------------------|
| 1 Liberal Democratic Party | 6 Japanese Communist Party |
| 2 Democratic Party for the People | 7 Other party |
| 3 Komeito | (name:) |
| 4 Nippon Ishin no Kai | |
| 5 Constitutional Democratic Party | |

⇒ (Proceed to Q14 after answering Q12-2)

<Q13-1–Q13-2 are exclusively for those who answered “2 I will definitely vote” or “3 I may vote” in Q11>

Q13-1. Which party’s candidate are you going to vote for in the House of Councillors prefectural electoral district? (Choose one answer only.)

- | | |
|-----------------------------------|----------------------------|
| 1 Liberal Democratic Party | 6 Japanese Communist Party |
| 2 Democratic Party for the People | 7 Another party |
| 3 Komeito | (name:) |
| 4 Nippon Ishin no Kai | 8 Independent |
| 5 Constitutional Democratic Party | |

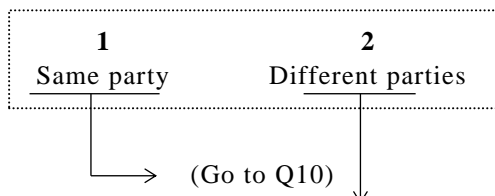
Q13-2. Which party or party’s candidate are you going to vote for in the national proportional-representation block for the House of Councillors? (Choose one answer only.)

- | | |
|-----------------------------------|----------------------------|
| 1 Liberal Democratic Party | 6 Japanese Communist Party |
| 2 Democratic Party for the People | 7 Another party |
| 3 Komeito | (name:) |
| 4 Nippon Ishin no Kai | |
| 5 Constitutional Democratic Party | |

⇒ (Proceed to Q14 after answering Q13-2)

<Q14 and Q14-1 are exclusively for those who answered “2 I will definitely vote” or “3 I may vote” in Q11. Those who answered “1 I have already voted early or absentee” in Q 11 should read the following sentences as: “the party I voted for.”>

Q14. Are the political party of the candidate you are going to vote (or have voted) for in the electoral district and the political party of the candidate you are going to vote (or have voted) for in the proportional-representation block the same or different parties? (Choose one answer only.)

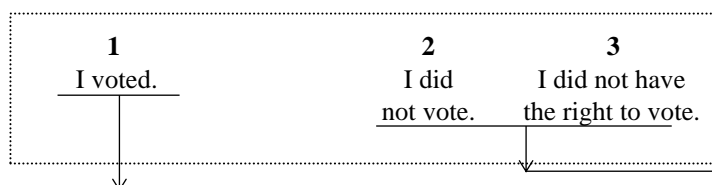


<For those who answered “2 Different parties” in Q14>

Q14-1. Why is that? Select the correct answer below. (Choose one answer only.)

- 1 There is no candidate from the party I support in the electoral district.
- 2 I am sure that a candidate from the party I support will be elected in the electoral district, even if I don't vote.
- 3 I am sure that no candidate from the party I support will be elected in the electoral district, even if I vote.
- 4 There is a candidate from another party whom I would like to support in the proportional-representation block.
- 5 In both the electoral district and the proportional-representation block, I will decide whom to vote for, regardless of political parties.
- 6 I will consider the balance of seats.
- 7 Other

Q15. This question is about the House of Councillors election held three years ago in July 2016. Did you vote in that election? Did you abstain from voting or lack the right to vote? (Choose one answer only.)



→(Go to Q16)

<For those who answered “1 voted.” in Q15>

Q15-1. Which party's candidate did you vote for in the electoral district election? (Choose one answer only.)

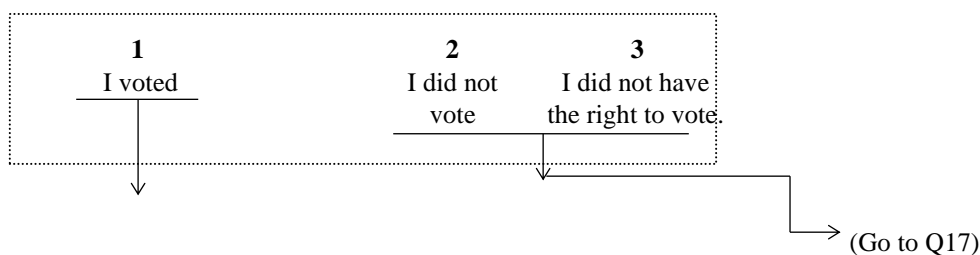
- | | |
|----------------------------|--|
| 1 Liberal Democratic Party | 6 Another party |
| 2 Democratic Party | 7 Independent |
| 3 Komeito | 8 I don't remember, although I did vote. |
| 4 Initiatives from Osaka | |
| 5 Japanese Communist Party | |

Q15-2. Which party or party's candidate did you vote for in the proportional-representation block, where voters select a political party or candidate? (Choose one answer only.)

- | | |
|----------------------------|--|
| 1 Liberal Democratic Party | 6 Another party |
| 2 Democratic Party | 7 I don't remember, although I did vote. |
| 3 Komeito | |
| 4 Initiatives from Osaka | |
| 5 Japanese Communist Party | |

<To all>

Q16. This question is about the last House of Representatives election, held two years ago in October 2017. Did you vote in that election? Did you abstain from voting or have no right to vote? (Choose one answer only.)



<For those who answered “1 I voted” in Q16>

Q16-1. Which party's candidate did you vote for in the single-member district? (Choose one answer only.)

- | | |
|-----------------------------------|--|
| 1 Liberal Democratic Party | 6 Party of Hope |
| 2 Constitutional Democratic Party | 7 Another party |
| 3 Komeito | 8 Independent |
| 4 Nippon Ishin no Kai | 9 I don't remember, although I did vote. |
| 5 Japanese Communist Party | |

Q16-2. Which party did you vote for in the proportional-representation block, where voters select a political party? (Choose one answer only.)

- | | |
|-----------------------------------|--|
| 1 Liberal Democratic Party | 6 Party of Hope |
| 2 Constitutional Democratic Party | 7 Another party |
| 3 Komeito | 8 I don't remember, although I did vote. |
| 4 Nippon Ishin no Kai | |
| 5 Japanese Communist Party | |

<To all>

Q17. Which party do you think is capable of taking over the administration? Select all of the parties you think would be able to do this. (Multiple answers allowed)

- | | |
|-----------------------------------|-----------------|
| 1 Liberal Democratic Party | 7 Another party |
| 2 Democratic Party for the People | 8 No party |
| 3 Komeito | |
| 4 Nippon Ishin no Kai | |
| 5 Constitutional Democratic Party | |
| 6 Japanese Communist Party | |

Q18. A and B are different opinions about Abenomics, implemented by the Abe Cabinet. Which is closer to your opinion? (Choose one answer only.)

Opinion A: I appreciate Abenomics because issuing many government bonds has caused the Japanese yen to depreciate, promoted the business performance of export companies, and elevated stock prices.
B: I do not favor Abenomics because issuing many government bonds has caused the Japanese yen to depreciate, increased the price of imported products, and expanded the government debt.

- | | | | |
|------------|------------|------------|------------|
| 1 | 2 | 3 | 4 |
| Close to A | Somewhat A | Somewhat B | Close to B |

This question asks for your opinions on recent issues.

Q19. A and B are different opinions about the best way to use the increased consumption tax, which was raised to 10%.

Opinion

<p>A: A social security system oriented toward “all generations” should be implemented, for example, by using the increased tax income to make childhood education free for all.</p> <p>B: Given the huge government debt, including deficit-financing bonds, the increased tax income should be used to pay off the debt first, ensuring that it is not passed on to future generations.</p>

Q19-1. Which is closer to your opinion? (Choose one answer only.)

1	2	3	4
Close to A	Somewhat A	Somewhat B	Close to B

Q19-2. How important to you is the issue of how the increased consumption tax should be used? (Choose one answer only.)

1	2	3	4
Very important	Somewhat important	Somewhat unimportant	Very unimportant

Q19-3. What position do you think the following political parties will take on how to use the increased consumption tax? (Choose one answer only for each question from (1) through (6).)

	Close to A	Somewhat A	Somewhat B	Close to B
(1) Liberal Democratic Party	1	2	3	4
(2) Democratic Party for the People	1	2	3	4
(3) Komeito	1	2	3	4
(4) Nippon Ishin no Kai	1	2	3	4
(5) Constitutional Democratic Party	1	2	3	4
(6) Japanese Communist Party	1	2	3	4

Q20. A and B are different opinions about the Japanese security issue. Which is closer to your opinion? (Choose one answer only.)

Opinion

<p>A: Japan relies too much on the Japan-U.S. security alliance, so its own defense function should be strengthened.</p> <p>B: The Japan-U.S. security alliance is working effectively, so the current defense policy should be maintained.</p>

Q20-1. Which is closer to your opinion? (Choose one answer only.)

1	2	3	4
Close to A	Somewhat A	Somewhat B	Close to B

Q20-2. How important to you is the issue of Japanese security? (Choose one answer only.)

1	2	3	4
Very important	Somewhat important	Somewhat unimportant	Very unimportant

Q20-3. What position do you think the following political parties will take regarding Japanese security? (Choose one answer only for each question from (1) through (6).)

	Close to A	Somewhat A	Somewhat B	Close to B
(1) Liberal Democratic Party	1	2	3	4
(2) Democratic Party for the People	1	2	3	4
(3) Komeito	1	2	3	4
(4) Nippon Ishin no Kai	1	2	3	4
(5) Constitutional Democratic Party	1	2	3	4
(6) Japanese Communist Party	1	2	3	4

Q21. A and B are different opinions about the right to exercise collective self-defense.

Opinion	A: The right to exercise collective self-defense should be permitted in order to enhance the Japan-U.S. security alliance. B: The right to exercise collective self-defense should not be permitted because Japan might become involved in international disputes.
---------	---

Q21-1. Which is closer to your opinion? (Choose one answer only.)

1	2	3	4
Close to A	Somewhat A	Somewhat B	Close to B

Q21-2. How important to you is the issue of Japan's right to collective self-defense? (Choose one answer only.)

1	2	3	4
Very important	Somewhat important	Somewhat unimportant	Very unimportant

Q21-3. What position do you think the following political parties will take regarding the right to collective self-defense? (Choose one answer only for each question from (1) through (6).)

	Close to A	Somewhat A	Somewhat B	Close to B
(1) Liberal Democratic Party	1	2	3	4
(2) Democratic Party for the People	1	2	3	4
(3) Komeito	1	2	3	4
(4) Nippon Ishin no Kai	1	2	3	4
(5) Constitutional Democratic Party	1	2	3	4
(6) Japanese Communist Party	1	2	3	4

Q22. A and B are different opinions about welfare and the tax burden.

Opinion	A: Public services, such as welfare, should be enhanced even if taxes have to be raised. B: The tax burden should be reduced, even if public services, such as welfare, decline as a consequence.
---------	--

Q22-1. Which is closer to your opinion? (Choose one answer only.)

1	2	3	4
Close to A	Somewhat A	Somewhat B	Close to B

Q22-2. How important to you is the issue of welfare and the tax burden? (Choose one answer only.)

1	2	3	4
Very important	Somewhat important	Somewhat unimportant	Very unimportant

Q22-3. What position do you think the following political parties will take regarding welfare and the tax burden?
(Choose one answer only for each question from (1) through (6).)

	Close to A	Somewhat A	Somewhat B	Close to A
(1) Liberal Democratic Party	1	2	3	4
(2) Democratic Party for the People	1	2	3	4
(3) Komeito	1	2	3	4
(4) Nippon Ishin no Kai	1	2	3	4
(5) Constitutional Democratic Party	1	2	3	4
(6) Japanese Communist Party	1	2	3	4

Q23. A and B are different opinions about reinstating nuclear-power generation.

Opinion

A: Nuclear-power generation should be reinstated because thermal, wind, and solar power alone cannot meet Japan's electricity demands and may cause issues, such as power saving.
B: Nuclear-power generation should not be reinstated; instead, we should use thermal, wind, and solar power, as well as energy-saving measures, until the safety of nuclear power is confirmed.

Q23-1. Which is closer to your opinion? (Choose one answer only.)

1	2	3	4
Close to A	Somewhat A	Somewhat B	Close to B

Q23-2. How important to you is the issue of reinstating nuclear-power generation? (Choose one answer only.)

1	2	3	4
Very important	Somewhat important	Somewhat unimportant	Very unimportant

Q23-3. What position do you think the following political parties will take regarding reinstating nuclear-power generation? (Choose one answer only for each question from (1) through (6).)

	Close to A	Somewhat A	Somewhat B	Close to A
(1) Liberal Democratic Party	1	2	3	4
(2) Democratic Party for the People	1	2	3	4
(3) Komeito	1	2	3	4
(4) Nippon Ishin no Kai	1	2	3	4
(5) Constitutional Democratic Party	1	2	3	4
(6) Japanese Communist Party	1	2	3	4

Q24. A and B are different opinions about amending the constitution.

Opinion

A: The current constitution should be amended soon because it is out of date.
B: The current constitution should not be amended now because its principles are sound.

Q24-1. Which is closer to your opinion? (Choose one answer only.)

1	2	3	4
Close to A	Somewhat A	Somewhat B	Close to B

Q24-2. How important to you is the issue of amending the constitution? (Choose one answer only.)

1 Very important	2 Somewhat important	3 Somewhat unimportant	4 Very unimportant
-------------------------------	-----------------------------------	-------------------------------------	---------------------------------

Q24-3. What position do you think the following political parties will take regarding the issue of amending the constitution? (Choose one answer only for each question from (1) through (6).)

	Close to A	Somewhat A	Somewhat B	Close to A
(1) Liberal Democratic Party	1	2	3	4
(2) Democratic Party for the People	1	2	3	4
(3) Komeito	1	2	3	4
(4) Nippon Ishin no Kai	1	2	3	4
(5) Constitutional Democratic Party	1	2	3	4
(6) Japanese Communist Party	1	2	3	4

Q25. Under the current law, a married couple must register a single shared surname in the family register.

A and B are different opinions about this issue. Which one is closer to your opinion?

Opinion

A: There is no need to change the law because it is a Japanese tradition for a married couple to share the same surname after marriage.
B: A married couple should be allowed to have different surnames if they want to because the values of married couples have changed over time.

Q25-1. Which is closer to your opinion? (Choose one answer only.)

1 Close to A	2 Somewhat A	3 Somewhat B	4 Close to B
------------------------	------------------------	------------------------	------------------------

Q25-2. How important to you is the issue of married couples having the same surname? (Choose one answer only.)

1 Very important	2 Somewhat important	3 Somewhat unimportant	4 Very unimportant
-------------------------------	-----------------------------------	-------------------------------------	---------------------------------

Q25-3. What position do you think the following political parties will take regarding the issue of married couples having the same surname? (Choose one answer only for each question from (1) through (6).)

	Close to A	Somewhat A	Somewhat B	Close to A
(1) Liberal Democratic Party	1	2	3	4
(2) Democratic Party for the People	1	2	3	4
(3) Komeito	1	2	3	4
(4) Nippon Ishin no Kai	1	2	3	4
(5) Constitutional Democratic Party	1	2	3	4
(6) Japanese Communist Party	1	2	3	4

Q26. A and B are different opinions about whether the constitution should provide a clear basis for Japan's self-defense forces.

Opinion A: Article 9 should specify the grounds for self-defense forces in Japan.
B: The constitutional basis for Japan's self-defense forces should not be specified without amending Article 9.

Q26-1. Which is closer to your opinion? (Choose one answer only.)

1	2	3	4
Close to A	Somewhat A	Somewhat B	Close to B

Q26-2. How important to you is the issue of whether the constitution should provide a clear basis for Japan's self-defense forces? (Choose one answer only.)

1	2	3	4
Very important	Somewhat important	Somewhat unimportant	Very unimportant

Q26-3. What position do you think the following political parties will take on whether the constitution should provide a clear basis for Japan's self-defense forces? (Choose one answer only for each question from (1) through (6).)

	Close to A	Somewhat A	Somewhat B	Close to B
(1) Liberal Democratic Party	1	2	3	4
(2) Democratic Party for the People	1	2	3	4
(3) Komeito	1	2	3	4
(4) Nippon Ishin no Kai	1	2	3	4
(5) Constitutional Democratic Party	1	2	3	4
(6) Japanese Communist Party	1	2	3	4

Q27. By the way, words such as "conservative" and "progressive" are often used to describe political positions. Which political position do you identify with? In the scale below, 0 is the most progressive, 10 is the most conservative, and 5 is in the middle. Numbers to the left of 5 indicate more progressive views, while those to the right of 5 indicate more conservative views.

0	1	2	3	4	5	6	7	8	9	10
Progressive						Conservative				

Q28. How satisfied do you feel with current politics? (Choose one answer only.)

1	2	3	4	5
Very satisfied	Somewhat satisfied	Neither satisfied nor dissatisfied	Somewhat dissatisfied	Very dissatisfied

Q29. Regardless of whether an election is coming up, some people are always interested in politics, while others are less interested. How much attention do you pay to political issues? Which of the following descriptions is most applicable to you? (Choose one answer only.)

1 I pay a lot of attention	2 I pay some attention	3 I do not pay much attention	4 I hardly pay any attention
---	-------------------------------------	--	---

Q30. Do you support the Abe Cabinet? (Choose one answer only.)

- | |
|--|
| 1 Strongly support
2 Somewhat support
3 Slightly support
4 Do not support |
|--|

Q31. How would you describe Japan's current economic situation? (Choose one answer only.)

- | | | | | |
|-----------------------|------------------------------|-------------------------------------|-----------------------------|----------------------|
| 1
Very good | 2
Somewhat
good | 3
Neither
good nor bad | 4
Somewhat
bad | 5
Very bad |
|-----------------------|------------------------------|-------------------------------------|-----------------------------|----------------------|

Q32. How does the current economic situation compare with the situation a year ago? (Choose one answer only.)

- | | | | | |
|-------------------------|--------------------------------|----------------------|-------------------------------|-----------------------------|
| 1
Much better | 2
Somewhat
better | 3
The same | 4
Somewhat
worse | 5
Very much worse |
|-------------------------|--------------------------------|----------------------|-------------------------------|-----------------------------|

Q33. What do you think the Japanese economy will be like in the future? (Choose one answer only.)

- | | | | | |
|---------------------------------------|---|------------------------------------|--|--------------------------------------|
| 1
It will be
much better | 2
It will be
somewhat better | 3
It will be
the same | 4
It will be
slightly worse | 5
It will be
much worse |
|---------------------------------------|---|------------------------------------|--|--------------------------------------|

Q34. There is a view that public pensions are not enough to cover people's living expenses after retirement, and that people must save an additional 20 million yen. A and B are different views on public pensions. Which is closer to your opinion?

- Opinion
- | |
|--|
| <p>A: The government and ruling parties are responsible for ensuring that elderly people have stable living conditions because they have said that the current public pension system is secure for the next 100 years.</p> <p>B: As the opposition parties have offered no concrete alternatives to the current pension system, the government and ruling parties do not bear all responsibility. People themselves should prepare for post-retirement life.</p> |
|--|

- | | | | |
|------------------------|------------------------|------------------------|------------------------|
| 1
Close to A | 2
Somewhat A | 3
Somewhat B | 4
Close to B |
|------------------------|------------------------|------------------------|------------------------|

Q35. How satisfied are you with your current way of life? (Choose one answer only.)

- | | | | | |
|-------------------------------|-----------------------------------|---|--------------------------------------|----------------------------------|
| 1
Very
satisfied | 2
Somewhat
satisfied | 3
Neither satisfied
nor dissatisfied | 4
Somewhat
dissatisfied | 5
Very
dissatisfied |
|-------------------------------|-----------------------------------|---|--------------------------------------|----------------------------------|

Q36. How does your current way of life compare to the way you lived a year ago? (Choose one answer only.)

- | | | | | |
|----------|----------|----------|----------|----------|
| 1 | 2 | 3 | 4 | 5 |
|----------|----------|----------|----------|----------|

Much better Somewhat better The same Slightly worse Much worse

Q39. What do you think your life will be like in the future? Select the answer (below) that most closely represents your views. (Choose one answer only.)

1 It will be Much better	2 It will be somewhat better	3 It will be the same	4 It will be slightly worse	5 It will be much worse
---------------------------------------	---	------------------------------------	--	--------------------------------------

Q38. How do you feel about your future life? Select the answer that most closely represents your feelings. (Choose one answer only.)

1 Not anxious at all	2 Not very anxious	3 Neutral	4 Somewhat anxious	5 Very anxious
-----------------------------------	---------------------------------	---------------------	---------------------------------	-----------------------------

Q39-1. How much do you expect from the future Abe Cabinet? Let's start from their fiscal policy. (Choose one answer only.)

1 Strongly expected	2 Somewhat expected	3 Neither expected nor unexpected	4 Somewhat unexpected	5 Very expected
----------------------------------	----------------------------------	--	------------------------------------	------------------------------

Q39-2. How much do you expect from their economic measures? (Single answered only)

1 Strongly expected	2 Somewhat expected	3 Neither expected nor unexpected	4 Somewhat unexpected	5 Very expected
----------------------------------	----------------------------------	--	------------------------------------	------------------------------

Q39-3. How much do you expect from their diplomacy? (Choose one answer only.)

1 Strongly expected	2 Somewhat expected	3 Neither expected nor unexpected	4 Somewhat unexpected	5 Very expected
----------------------------------	----------------------------------	--	------------------------------------	------------------------------

Q39-4. How much do you expect from their political leadership? (Choose one answer only.)

1 Strongly expected	2 Somewhat expected	3 Neither expected nor unexpected	4 Somewhat unexpected	5 Very expected
----------------------------------	----------------------------------	--	------------------------------------	------------------------------

Q39-5. How much do you expect from the future Abe Cabinet as a whole? (Choose one answer only.)

1 Strongly expected	2 Somewhat expected	3 Neither expected nor unexpected	4 Somewhat unexpected	5 Very expected
----------------------------------	----------------------------------	--	------------------------------------	------------------------------

Q40. How much do you trust the following? Select the answer that best represents your views. (Choose one answer only for each question from (1) through (6).)

	Strongly trust	Somewhat trust	Somewhat distrust	Strongly distrust
(1) Ruling parties	1	2	3	4
(2) Existing political parties	1	2	3	4
(3) Political parties/ politicians	1	2	3	4
(4) Indirect democracy such as elections	1	2	3	4
(5) Your prefectural governor ...	1	2	3	4

-12-

(6) Your prefectural assembly ... 1 2 3 4

Q41. Under the Public Office Election Act, a candidate's win will be nullified, due to guilt-by-association, if his/her campaigner is convicted in a law-violation case. In addition, the candidate will be banned from running in the same constituency for a certain period of time. How long do you think that is? Select the correct answer.

1	2	3	4
4 years	5 years	6 years	10 years

Q42. Amendments to the Japanese Constitution require a resolution of both Houses of the Diet and an affirmative vote in a referendum. Which of the following statements would apply to such an event? Select the correct answer.

1	An affirmative vote of two-thirds or more of the members of both Houses, and affirmative vote of two-thirds of members in a referendum
2	An affirmative vote of a majority of the members of both Houses, and an affirmative majority vote in a referendum
3	An affirmative vote of two-thirds or more of the members of both Houses, and affirmative majority vote in a referendum
4	An affirmative vote of a majority of the members of both Houses and a two-thirds affirmative vote in a referendum

Q43. If the House of Representatives and the House of Councillors vote differently on a bill, the bill can become law if passed again by the House of Representatives. How many votes do you think are needed in such a case? Select the correct answer.

1	2	3	4
A majority of members in attendance	A majority of all members of the House	Two-thirds of members in attendance	Two-thirds of all members of the House

Q44. Who is the current Vice President of the United States? Select the correct answer below.

1	2	3
Donald Trump	Joe Biden	Mike Pence
4	5	
Dick Cheney	Mike Pompeo	

Q45. Who is the current Prime Minister of the United Kingdom? Select the correct answer below.

1	2	3
Gordon Brown	Tony Blair	Boris Johnson
4	5	
Theresa May	Jeremy Hunt	

Q47. Which policy matters most to you in the upcoming election? Please tell us your second and third priorities, as well.

1 Diplomacy and security	9 Environment	17 other
2 Finance	10 Politics and administrative reform	
3 Industry and business	11 Decentralization	
4 Agriculture, forestry, and fisheries	12 Constitution (pro-constitution and constitutional amendment)	
5 Education and parenting	13 Earthquake recovery and disaster prevention	
6 Pensions and medical care	14 Social capital (infrastructure, etc.)	
7 Employment	15 Nuclear-power generation and energy policy	

First

Second

Third

Q47. Do you think you understand the manifestos and election promises of political parties such as the Liberal Democratic Party and Constitutional Democratic Party in this election? Alternatively, do you feel that you don't understand them? Select the answer that best applies to each party. (Choose one answer only for each question from (1) through (3).)

	I understand understand at all	I understand at some level	I neither understand nor do not understand	I do not understand much	I do not
(1) The election promises of the Liberal Democratic Party	1	2	3	4	5
(2) The election promises of the Democratic Party for the People	1	2	3	4	5
(3) The election promises of Komeito	1	2	3	4	5
(4) The election promises of Nippon Ishin no Kai	1	2	3	4	5
(5) The election promises of the Constitutional Democratic Party	1	2	3	4	5
(6) The election promises of the Japanese Communist Party	1	2	3	4	5

Q48. The following statements present various opinions about politics. What do you think of them? Do you agree or disagree? **(Circle one answer only for each question from (1) through (3).)**

	Agree	Somewhat agree	Somewhat disagree	Disagree
(1) Political parties give voters a voice in politics.	1	2	3	4
(2) Elections give voters a voice in politics.	1	2	3	4
(3) The Diet gives voters a voice in politics.	1	2	3	4

Q49. The following statements describe the relationship between the people, elections, and politics. Choose the response that most closely matches your views. **(Circle one answer only for each question from (1) through (6).)**

	Agree	Somewhat agree	Neither agree nor disagree	Somewhat disagree	Disagree
(1) Many people vote in an election, so it does not matter whether I vote or not.	1	2	3	4	5
(2) I do not have the power to influence what the government does.	1	2	3	4	5
(3) Politics and government are very complicated; a lot of the time, I do not understand what they are doing.	1	2	3	4	5
(4) Roughly speaking, Diet members stop thinking about ordinary people as soon as they are elected.	1	2	3	4	5
(5) Politicians do not think about us.	1	2	3	4	5
(6) If a bill that I consider extremely dangerous is proposed at the Diet, I don't just leave it to the Diet members to discuss. Instead, I myself take action in various ways to protest the bill.	1	2	3	4	5

Q50. Do you like or dislike the following countries? Select the answers that best reflect your views. (Choose one

answer only for each question from (1) through (14).)

	I like this country very much.	I somewhat like this country.	I somewhat dislike this country.	I dislike this country very much.
(1) U.S.	1	2	3	4
(2) China	1	2	3	4
(3) Russia	1	2	3	4
(4) EU and European countries	1	2	3	4
(5) South Korea	1	2	3	4
(6) Taiwan	1	2	3	4
(7) Australia	1	2	3	4

Q57. Are you proud of being Japanese? Select the answer that best matches your feelings. (Choose one answer only.)

1 2 3 4 5
 Very proud Somewhat proud Not very proud Not proud at all I am not Japanese

Q52. How do you think the Japanese government should respond to the fact that South Korea seized the assets of Japanese companies over the issue of forced wartime labor? Should Japan do or not do the following on each of the following measures? (Choose one answer only in each case.)

- | |
|---|
| (1) Seize the assets of Korean companies in Japan
1. Should do 2. Should not do

(2) Increase tariffs on products imported from South Korea
1. Should do 2. Should not do

(3) Impose export controls on semiconductor materials used by Korean companies
1. Should do 2. Should not do

(4) Impose restrictions on visa-free visits for Korean passport holders
1. Should do 2. Should not do

(5) Have the Japanese ambassador to South Korea temporarily return to Japan
1. Should do 2. Should not do |
|---|

Q53. Which of the following potential candidates do you think would make the most suitable Prime Minister, after Abe? (Choose one answer only.)

- | | | | | |
|---------------------|----------------------|---------------------|--------------------------|-----------------------|
| 1
SUGA Yoshihide | 2
KISHIDA Fumio | 3
KATO Katsunobu | 4
ISHIBA Shigeru | 5
YAMAGUCHI Natsuo |
| 6
EDANO Yukio | 7
TAMAKI Yuichiro | 8
SHII Kazuo | 9
Other (name: _____) | |

Q54. How will you feel if Abe remains the Prime Minister and President of the Liberal Democratic Party after the Fall of 2021, when his current term as the LDP President ends? (Choose one answer only.)

- | | | | |
|------------|---------------------|------------------------|---------------|
| 1
Agree | 2
Somewhat agree | 3
Somewhat disagree | 4
Disagree |
|------------|---------------------|------------------------|---------------|

Q55. Do you subscribe to a newspaper? If so, which of the following do you read?

- | | |
|--------------------|--|
| 1 Yomiuri Shimbun | 9 Chunichi Shimbun (incl. Hokuriku Chunichi Shimbun) |
| 2 Asahi Shimbun | 10 Niigata Nippo |
| 3 Mainichi Shimbun | 11 Shinano Mainichi Shimbun |
| 4 Sankei Shimbun | 12 Kobe Shimbun |

- | | |
|--------------------|---------------------------------------|
| 5 Nikkei | 13 Chugoku Shimbun |
| 6 Tokyo Shimbun | 14 Nishinippon Shimbun |
| 7 Hokkaido Shimbun | 15 Another newspaper |
| 8 Kahoku Shimpō | 16 I do not subscribe to a newspaper. |

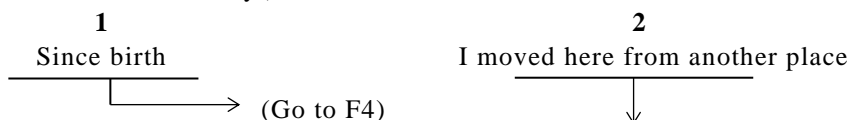
[Face sheet]

Those are all the questions we have for you. Lastly, please let us know some things about yourself for statistical-processing purposes.

Q56. Age: How old are you? Select the appropriate answer below.

- | | |
|-------|-----------|
| 1 10s | 5 50s |
| 2 20s | 6 60s |
| 3 30s | 7 Over 70 |
| 4 40s | |

Q57. Places you have lived: Have you lived locally (within 30-minutes walking distance of this town, village, or housing complex) since you were born? Or have you moved from another place? If you were born near here but moved to another place temporarily, please choose “since birth.” (Choose one answer only.)



Q58. How long have you lived within 30-minutes walking distance of this town, village, or housing complex? If you live near here but have moved temporarily to another place, please count the total number of years you have lived locally. (Choose one answer only.)

1	2	3	4
3 years or fewer	4–9 years	10–14 years	15 years or more

☐

<To all>

Q59. Level of Education: What is your academic history? There is no need to include miscellaneous schools; if you dropped out of school or are currently a student, list yourself as a graduate. (Choose one answer only.)

1	2	3	4
Junior high school/ Higher elementary school	High school/ Old-system junior high school	College of technology/ Junior college/ Specialized training college	University/ Graduate school

Q60. Your Job: The next section asks about your job.

Are you employed, self-employed, or helping your family business? If you do not work, are you a student, housewife, or house husband? (Choose one answer only.)

1	2	3	4	5	6	7
Employed	Self-employed (incl. freelancer)	Family employee	Student	Housewife/ house husband	Unemployed	Other

↓ → (Go to (Q66).)

<Those who selected “1 Employed,” “2 Self-employed,” or “3 Family employee” in F4(1) should go to (3) after answering (2)>

Q61. Number of Employees: How many employees does your company, shop, or workplace have overall, including branch offices and sales offices? If you are a public servant, select “6 Public service” below. (Choose one answer only.)

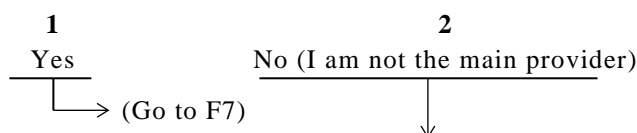
- | | |
|-----------------|------------------------|
| 1 1–4 people | 4 300–999 people |
| 2 5–29 people | 5 1,000 people or more |
| 3 30–299 people | 6 Public service |

<To all>

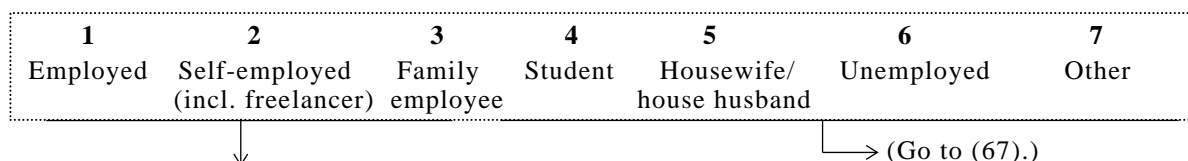
Q62. Which of the following categories includes your job? (Choose one answer only.)

- | | | |
|--|---------------------------------|----------------------------|
| 1 Agriculture, forestry, and fisheries | 5 Specialized technician | 9 Student |
| 2 Commerce and industry services | 6 Office work | 10 Housewife/house husband |
| 3 Freelance | 7 Sales/service/labor relations | 11 Unemployed |
| 4 Management | 8 Other employee | 12 Unclassifiable |

Q63. Job of the main household provider: Do you support your family financially as the main household provider? (Choose one answer only.)



Q64. This question involves the job of the person who financially supports your family. Is he/she employed or self-employed? (Choose one answer only.)



<Those who selected “1 Employed,” “2 Self-employed,” or “3 Family employee” in F5(1) should go to (3) after answering (2)>

Q65. Number of Employees: How many employees does the company, shop, or workplace of the person who supports your family have overall, including branch offices and sales offices? If this person is a public servant, select “6 Public service.” (Choose one answer only.)

- | | |
|-----------------|------------------------|
| 1 1–4 people | 4 300–999 people |
| 2 5–29 people | 5 1,000 people or more |
| 3 30–299 people | 6 Public service |

Q66. Which of the following categories includes the job above? (Choose one answer only.)

- | | | |
|--|---------------------------------|----------------------------|
| 1 Agriculture, forestry, and fisheries | 5 Specialized technician | 9 Student |
| 2 Commerce and industry services | 6 Office work | 10 Housewife/house husband |
| 3 Freelance | 7 Sales/service/labor relations | 11 Unemployed |
| 4 Management | 8 Other employee | 12 Unclassifiable |

<To all>

Q67. Residence: What type of house do you live in? (Choose one answer only.)

- | | |
|---|---|
| 1 Own house (detached house) | 6 Job-related house (company housing/housing for public servants) |
| 2 Condominium | 7 Live-in/ dormitory/ boarding house, etc. |
| 3 Private rental house (detached house) | 8 Other |
| 4 Private rental apartment/condominium | |

5 Public rental house/apartment

Q68. Household Income: In total, how much did you and your family members earn last year (from January to December, 2018)? Please include bonuses, extra income, and tax. (Choose one answer only.)

- 1** Up to 2,000,000 yen
- 2** 2,000,000–up to 3,000,000 yen
- 3** 3,000,000–up to 4,000,000 yen
- 4** 4,000,000–up to 5,000,000 yen
- 5** 5,000,000–up to 6,000,000 yen
- 6** 6,000,000–up to 7,000,000 yen
- 7** 7,000,000–up to 8,000,000 yen
- 8** 8,000,000–up to 10,000,000 yen

- 9** 10,000,000–up to 12,000,000 yen
- 10** 12,000,000–up to 14,000,000 yen
- 11** 14,000,000–up to 20,000,000 yen
- 12** More than 20,000,000 yen

Thank you for taking the time to complete this questionnaire.